



Computing Services Centre  
香港城市大學  
City University of Hong Kong

# USER GUIDE FOR **USING AV EQUIPMENT**

Run Run Shaw Creative Media Centre

4/F Classrooms (Dual Projection)

For IT or AV support, please contact the CSC Service Desk at **3442-8340**

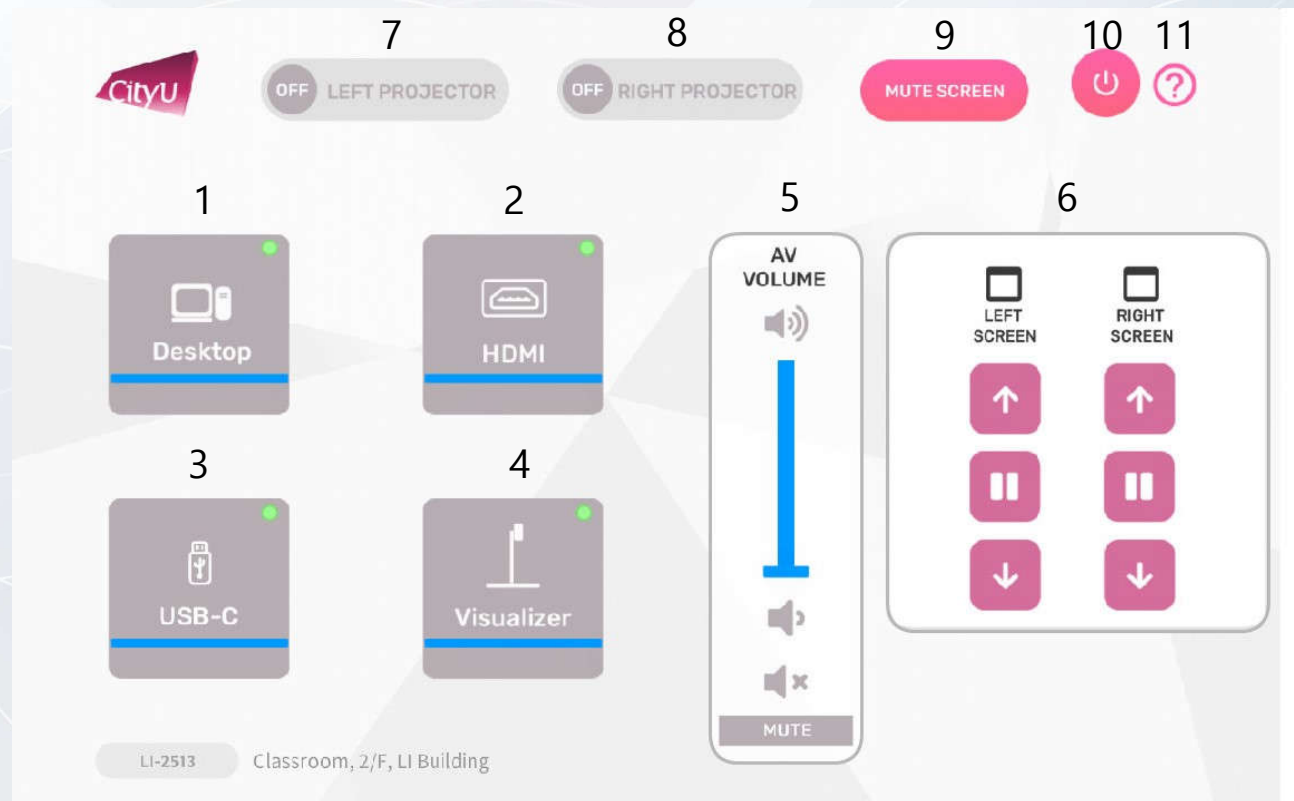
## AV Control Panel

### Display Source Select

1. Desktop Computer
2. HDMI Input (Use HDMI devices)
3. USB-C Input (Use USB-C devices)
4. Presentation for Visualizer

### Other Control

5. Volume Control
6. Screen Control
7. Left Projector (On/Off)
8. Right Projector (On/Off)
9. Mute Projector(s)
10. System Off
11. Help information



# Using AV Equipment

## Operation procedure of the Desktop Input

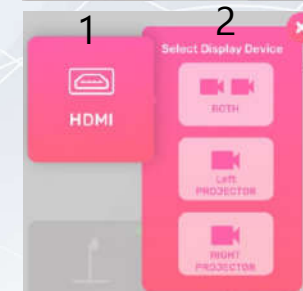
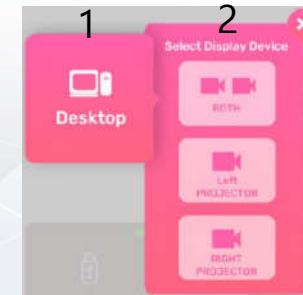
1. Press "Desktop" button
2. Select Display Devices (Both / Left Projector / Right Projector)

## Operation procedure of the HDMI Input

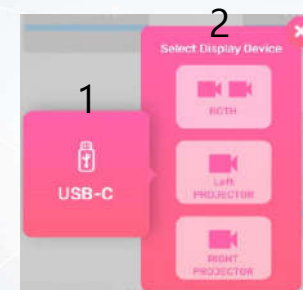
1. Press "HDMI" button
2. Select Display Devices (Both / Left Projector / Right Projector)
3. Connect the device to HDMI cable

## Operation procedure of the USB-C Input

1. Press "USB-C" button
2. Select Display Devices (Both / Left Projector / Right Projector)
3. Connect the device to USB-C cable



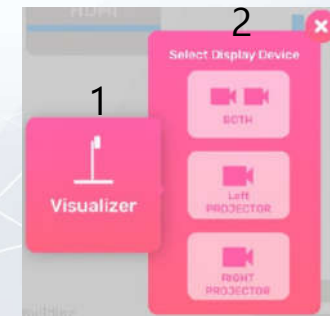
HDMI



USB-C

## Operation procedure of Visualizer Input

1. Press "Visualizer" button
2. Select Display Devices (Both / Left Projector / Right Projector)



## System OFF

1. Confirm Power off
2. Cancel Power off

